

Human PPM1G (aa 317-546, His Tag) recombinant protein



Catalog Number: 502376

General Information

Gene Name Synonym

Protein phosphatase 1C; Protein phosphatase 2C isoform gamma; Protein phosphatase magnesium-dependent 1 gamma

Protein Construction

A DNA sequence encoding the human PPM1G (O15355) C-terminal fragment (Met 317-Asp 546) was expressed, with a polyhistidine tag at the N-terminus.

Organism

Human

Expression Host

E. coli

QC Testing

Purity

> 95 % as determined by SDS-PAGE

Endotoxin

Please contact us for more information.

Stability

Samples are stable for up to twelve months from date of receipt at -70°C

Predicted N terminal

Met

Molecular Mass

The recombinant human PPM1G comprises 241 amino acids and has a predicted molecular mass of 26.6 kDa. It migrates as an approximately 30 kDa band in SDS-PAGE under reducing conditions.

Formulation

Lyophilized from sterile 50mM Tris, 1mM DTT, 20% glycerol, pH 7.5

1. 5 % trehalose and mannitol are added as protectants before lyophilization.
2. Please contact us for any concerns or special requirements.

Usage Guide

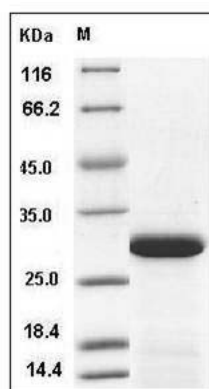
Storage

Store it under sterile conditions at -20°C to -80°C. It is recommended that the protein be aliquoted for optimal storage. Avoid repeated freeze-thaw cycles.

Reconstitution

Adding sterile water, prepare a stock solution of 0.25 mg/ml. Concentration is measured by UV-Vis.

SDS-PAGE



Human PPM1G / PP2C-gamma Protein (aa 317-546, His Tag) SDS-PAGE