

# Human GFRA2 (His Tag) recombinant protein



Catalog Number: 502363

## General Information

### Gene Name Synonym

GDNF receptor beta; Neurturin receptor alpha; RET ligand 2; TGF-beta-related neurotrophic factor receptor 2

### Protein Construction

A DNA sequence encoding the human GFR $\beta$ 2 (NP\_001486.4) without the propeptide (Met 1-Ser 441) was fused with a polyhistidine tag at the C-terminus.

### Organism

Human

### Expression Host

Human Cells

## QC Testing

### Purity

> 98 % as determined by SDS-PAGE

### Endotoxin

< 1.0 EU per  $\mu$ g of the protein as determined by the LAL method

### Stability

Samples are stable for up to twelve months from date of receipt at -70°C

### Predicted N terminal

Ser 22

### Molecular Mass

The recombinant human GFR $\beta$ 2 consists of 431 amino acids after removal of the signal peptide and predicts a molecular mass of 48.2 kDa. As a result of glycosylation, the apparent molecular mass of rhGFR $\beta$ 2 is approximately 60-70 kDa in SDS-PAGE under reducing conditions.

### Formulation

Lyophilized from sterile PBS, pH 7.5

1. 5 % trehalose and mannitol are added as protectants before lyophilization.

2. Please contact us for any concerns or special requirements.

## Usage Guide

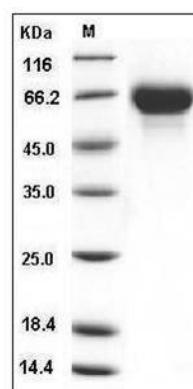
### Storage

Store it under sterile conditions at -20°C to -80°C. It is recommended that the protein be aliquoted for optimal storage. Avoid repeated freeze-thaw cycles.

### Reconstitution

Adding sterile water, prepare a stock solution of 0.25 mg/ml. Concentration is measured by UV-Vis.

### SDS-PAGE



Human GFRA2 / GFR $\beta$ 2 / GDNFRB Protein (His Tag) SDS-PAGE