

## General Information

### Gene Name Synonym

Phosphatidylcholine 2-acylhydrolase 2E

### Protein Construction

A DNA sequence encoding the mouse PLA2G2E (Q9QUL3) (Met 1-Cys 142) was expressed, with a C-terminal polyhistidine tag.

### Organism

Mouse

### Expression Host

Human Cells

## QC Testing

### Purity

> 97 % as determined by SDS-PAGE

### Endotoxin

< 1.0 EU per µg of the protein as determined by the LAL method

### Stability

Samples are stable for up to twelve months from date of receipt at -70°C

### Predicted N terminal

Asn 20

### Molecular Mass

The secreted recombinant mouse PLA2G2E

comprises 134 amino acids and has a calculated molecular mass of 15.5 kDa. The apparent molecular mass of the recombinant protein is approximately 18 kDa in SDS-PAGE under reducing conditions.

### Formulation

Lyophilized from sterile PBS, 10% glycerol, pH 7.4  
1. 5 % trehalose and mannitol are added as protectants before lyophilization.  
2. Please contact us for any concerns or special requirements.

## Usage Guide

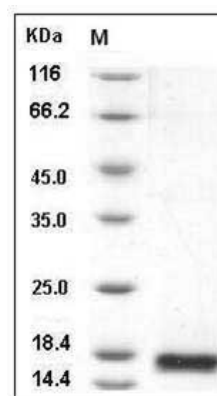
### Storage

Store it under sterile conditions at -20°C to -80°C. It is recommended that the protein be aliquoted for optimal storage. Avoid repeated freeze-thaw cycles.

### Reconstitution

Adding sterile water, prepare a stock solution of 0.25 mg/ml. Concentration is measured by UV-Vis.

### SDS-PAGE



Mouse PLA2G2E Protein (His Tag) SDS-PAGE