

Human UBE2M recombinant protein



Catalog Number: 502289

General Information

Gene Name Synonym

NEDD8 carrier protein; NEDD8 protein ligase;
Ubiquitin-conjugating enzyme E2 M

Protein Construction

A DNA sequence encoding the human UBE2M (P61081) (Met 1-Lys 183) was expressed and purified, with additional two amino acids (Gly & Pro) at the N-terminus.

Organism

Human

Expression Host

E. coli

QC Testing

Purity

> 90 % as determined by SDS-PAGE

Endotoxin

Please contact us for more information.

Stability

Samples are stable for up to twelve months from date of receipt at -70°C

Predicted N terminal

Gly

Molecular Mass

The recombinant human UBE2M consists of 185 amino acids and has a calculated molecular mass of 21 kDa. It migrates as an approximately 20 kDa band in SDS-PAGE under reducing conditions.

Formulation

Lyophilized from sterile PBS, 10% glycerol, 1mM DTT, pH 8.0

1. 5 % trehalose and mannitol are added as protectants before lyophilization.
2. Please contact us for any concerns or special requirements.

Usage Guide

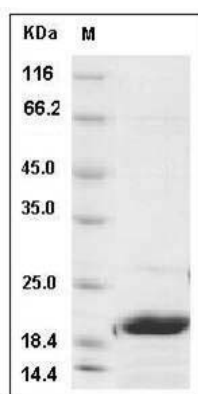
Storage

Store it under sterile conditions at -20°C to -80°C. It is recommended that the protein be aliquoted for optimal storage. Avoid repeated freeze-thaw cycles.

Reconstitution

Adding sterile water, prepare a stock solution of 0.25 mg/ml. Concentration is measured by UV-Vis.

SDS-PAGE



Human UBE2M Protein SDS-PAGE