

Rhesus IGFBP-2 / IGFBP2 (His Tag) recombinant protein



Catalog Number: 502258

General Information

Protein Construction

A DNA sequence encoding the rhesus IGFBP2 (XP_001087071.1) (Met1-Gln324) was expressed, fused with a polyhistidine tag at the C-terminus.

Organism

Rhesus

Expression Host

Human Cells

QC Testing

Activity

Measured by its ability to inhibit the biological activity of IGFI or IGFI on MCF7 human breast adenocarcinoma cells (Karey, K.P. et al. (1988) Cancer Research 48:4083.).

The ED₅₀ for this effect is typically 0.02-0.1 µg/mL in the presence of 14 ng/mL human IGFI.

Purity

> 67 % as determined by SDS-PAGE

Endotoxin

< 1.0 EU per µg of the protein as determined by the LAL method

Stability

Samples are stable for up to twelve months from date of receipt at -70°C

Predicted N terminal

Glu 38

Molecular Mass

The recombinant rhesus IGFBP2 comprises 300 amino acids and has a calculated molecular mass of 32.8 KDa.

Formulation

Lyophilized from sterile PBS, pH 7.4

1. 5 % trehalose and mannitol are added as protectants before lyophilization.

2. Please contact us for any concerns or special requirements.

Usage Guide

Storage

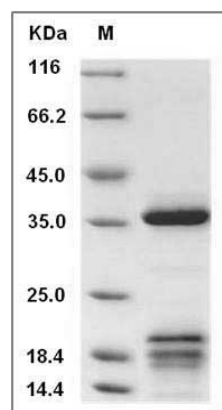
Store it under sterile conditions at -20°C to -80°C.

It is recommended that the protein be aliquoted for optimal storage. Avoid repeated freeze-thaw cycles.

Reconstitution

Adding sterile water, prepare a stock solution of 0.25 mg/ml. Concentration is measured by UV-Vis.

SDS-PAGE



Cynomolgus IGFBP2 Protein (His Tag) SDS-PAGE