

Mouse PSMA / FOLH1 (His Tag) recombinant protein



Catalog Number: 502244

General Information

Gene Name Synonym

Folate hydrolase 1; Folylpoly-gamma-glutamate carboxypeptidase; Glutamate carboxypeptidase II; Membrane glutamate carboxypeptidase; N-acetylated-alpha-linked acidic dipeptidase I; Prostate-specific membrane antigen homolog; Pteroylpoly-gamma-glutamate carboxypeptidase

Protein Construction

A DNA sequence encoding the mouse FOLH1 (NP_058050.3) extracellular domain (Ile 44-Ala 752) was expressed, fused with a polyhistidine tag at the N-terminus.

Organism

Mouse

Expression Host

Human Cells

QC Testing

Purity

> 88 % as determined by SDS-PAGE

Endotoxin

< 1.0 EU per μg of the protein as determined by the LAL method

Stability

Samples are stable for up to twelve months from date of receipt at -70°C

Predicted N terminal

His

Molecular Mass

The recombinant mouse FOLH1 consists of 725 amino acids and has a calculated molecular mass of 81.8 kDa. As a result of glycosylation, the recombinant protein migrates as an approximately 100-110 kDa band in SDS-PAGE under reducing conditions.

Formulation

Lyophilized from sterile PBS, pH 7.4

1. 5 % trehalose and mannitol are added as protectants before lyophilization.

2. Please contact us for any concerns or special requirements.

Usage Guide

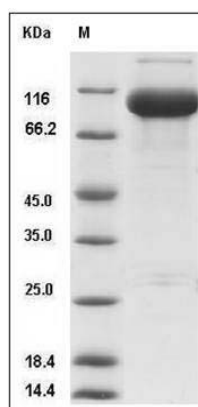
Storage

Store it under sterile conditions at -20°C to -80°C . It is recommended that the protein be aliquoted for optimal storage. Avoid repeated freeze-thaw cycles.

Reconstitution

Adding sterile water, prepare a stock solution of 0.25 mg/ml. Concentration is measured by UV-Vis.

SDS-PAGE



Mouse PSMA / FOLH1 Protein (His Tag) SDS-PAGE