

# Mouse PRL/Prolactin (His Tag) recombinant protein



Catalog Number: 502219

## General Information

### Protein Construction

A DNA sequence encoding the mouse PRL (P09411) (Leu 32-Cys 228) was expressed with an initial Met at the N-terminus and a polyhistidine tag at the C-terminus.

### Organism

Mouse

### Expression Host

Baculovirus-Insect Cells

## QC Testing

### Purity

> 92 % as determined by SDS-PAGE

### Endotoxin

< 1.0 EU per  $\mu\text{g}$  of the protein as determined by the LAL method

### Stability

Samples are stable for up to twelve months from date of receipt at  $-70^{\circ}\text{C}$

### Predicted N terminal

Met

### Molecular Mass

The recombinant mouse PRL consists of 207 amino acids and has a calculated molecular mass of 23.8 kDa. It migrates as an approximately 26

kDa band in SDS-PAGE under reducing conditions.

### Formulation

Lyophilized from sterile 20mM Tris, 500mM NaCl, pH 7.4, 10% glycerol

1. 5 % trehalose and mannitol are added as protectants before lyophilization.

2. Please contact us for any concerns or special requirements.

## Usage Guide

### Storage

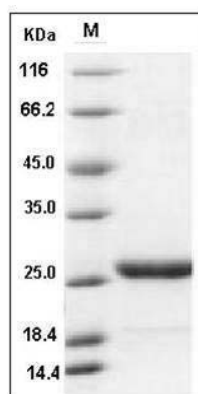
Store it under sterile conditions at  $-20^{\circ}\text{C}$  to  $-80^{\circ}\text{C}$ .

It is recommended that the protein be aliquoted for optimal storage. Avoid repeated freeze-thaw cycles.

### Reconstitution

Adding sterile water, prepare a stock solution of 0.25 mg/ml. Concentration is measured by UV-Vis.

## SDS-PAGE



Mouse PRL / Prolactin Protein (His Tag) SDS-PAGE