

# Human GFRA3 (His & Fc Tag) recombinant protein



Catalog Number: 502214

## General Information

### Protein Construction

A DNA sequence encoding the human GFRA3 (NP\_001487.2) (Met 1-Trp 382) was fused with the C-terminal polyhistidine-tagged Fc region of human IgG1 at the C-terminus.

### Organism

Human

### Expression Host

Human Cells

## QC Testing

### Activity

Measured by its ability to bind mouse ARTN in a functional ELISA.

### Purity

> 80 % as determined by SDS-PAGE

### Endotoxin

< 1.0 EU per  $\mu\text{g}$  of the protein as determined by the LAL method

### Stability

Samples are stable for up to twelve months from date of receipt at  $-70^{\circ}\text{C}$

### Predicted N terminal

Asp 32

### Molecular Mass

The recombinant human GFRA3/Fc is a disulfide-

linked homodimeric protein. The reduced monomer consists of 599 amino acids and predicts a molecular mass of 67.3 kDa. As a result of glycosylation, the rh GFRA3/Fc monomer migrates as an approximately 80 kDa band in SDS-PAGE under reducing conditions.

### Formulation

Lyophilized from sterile PBS, pH 7.5

1. 5 % trehalose and mannitol are added as protectants before lyophilization.

2. Please contact us for any concerns or special requirements.

## Usage Guide

### Storage

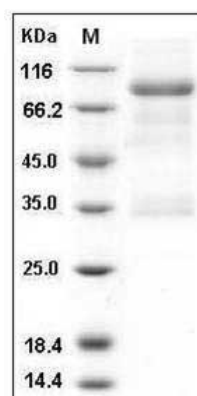
Store it under sterile conditions at  $-20^{\circ}\text{C}$  to  $-80^{\circ}\text{C}$ .

It is recommended that the protein be aliquoted for optimal storage. Avoid repeated freeze-thaw cycles.

### Reconstitution

Adding sterile water, prepare a stock solution of 0.25 mg/ml. Concentration is measured by UV-Vis.

### SDS-PAGE



Human GFRA3 / GFR-alpha-3 Protein (His & Fc Tag) SDS-PAGE