

# Human REG4 (His Tag) recombinant protein



Catalog Number: 502182

## General Information

### Gene Name Synonym

Gastrointestinal secretory protein; REG-like protein; Regenerating islet-derived protein IV

### Protein Construction

A DNA sequence encoding the human REG4 (NP\_001152824.1) (Met 1-Pro 158) was expressed, with a polyhistidine tag at the C-terminus.

### Organism

Human

### Expression Host

CHO Cells

## QC Testing

### Purity

> 85 % as determined by SDS-PAGE

### Endotoxin

< 1.0 EU per  $\mu\text{g}$  of the protein as determined by the LAL method

### Stability

Samples are stable for up to twelve months from date of receipt at  $-70^{\circ}\text{C}$

### Predicted N terminal

Ala 26

### Molecular Mass

The recombinant human REG4 consists of 147

amino acids and predicts a molecular mass of 17.4 kDa. In SDS-PAGE under reducing conditions, the apparent molecular mass of rh REG4 is approximately 17 and 21 kDa due to different glycosylation.

### Formulation

Lyophilized from sterile PBS, pH 7.4.

1. 5 % trehalose and mannitol are added as protectants before lyophilization.

2. Please contact us for any concerns or special requirements.

## Usage Guide

### Storage

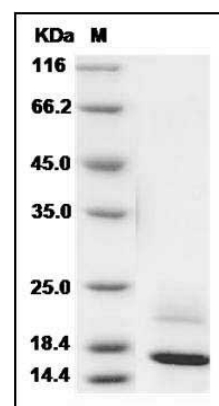
Store it under sterile conditions at  $-20^{\circ}\text{C}$  to  $-80^{\circ}\text{C}$ .

It is recommended that the protein be aliquoted for optimal storage. Avoid repeated freeze-thaw cycles.

### Reconstitution

Adding sterile water, prepare a stock solution of 0.25 mg/ml. Concentration is measured by UV-Vis.

### SDS-PAGE



Human REG4 / RELP / GISP Protein (His Tag)  
SDS-PAGE