

# Mouse CLEC1B/CLEC2 (Fc Tag) recombinant protein



Catalog Number: 502166

## General Information

### Gene Name Synonym

C-type lectin-like receptor 2

### Protein Construction

A DNA sequence encoding the mouse Clec1b (NP\_064369.1) (Met53-Leu229) was expressed with the Fc region of human IgG1 at the N-terminus.

### Organism

Mouse

### Expression Host

Human Cells

## QC Testing

### Purity

> 90 % as determined by SDS-PAGE.

### Endotoxin

<1.0 EU per  $\mu\text{g}$  protein as determined by the LAL method.

### Stability

Samples are stable for up to twelve months from date of receipt at  $-70^{\circ}\text{C}$

### Predicted N terminal

Glu

### Molecular Mass

The recombinant mouse Clec1b consists 437 amino acids and predicts a molecular mass of 49.1 kDa.

### Formulation

Lyophilized from sterile PBS, pH 7.4.

1. 5 % trehalose and mannitol are added as protectants before lyophilization.

2. Please contact us for any concerns or special requirements.

## Usage Guide

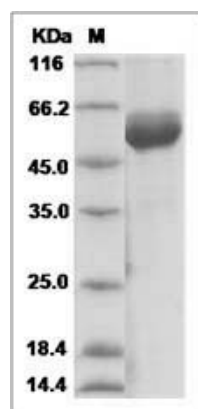
### Storage

Store it under sterile conditions at  $-20^{\circ}\text{C}$  to  $-80^{\circ}\text{C}$ . It is recommended that the protein be aliquoted for optimal storage. Avoid repeated freeze-thaw cycles.

### Reconstitution

Adding sterile water, prepare a stock solution of 0.25 mg/ml. Concentration is measured by UV-Vis.

### SDS-PAGE



Clec1b protein SDS-PAGE