

# Human APEX1/AP/APEX/Ref-1 (His Tag) recombinant protein



Catalog Number: 502151

## General Information

### Gene Name Synonym

APEX nuclease; Apurinic-apyrimidinic endonuclease 1; REF-1; Redox factor-1; DNA-(apurinic or apyrimidinic site) lyase, mitochondrial

### Protein Construction

A DNA sequence encoding the human APEX1 (P27695) (Pro2-Leu 318) was expressed, with a polyhistidine tag at the N-terminus.

### Organism

Human

### Expression Host

E. coli

## QC Testing

### Purity

> 92 % as determined by SDS-PAGE

### Endotoxin

< 1.0 EU per  $\mu\text{g}$  of the protein as determined by the LAL method

### Stability

Samples are stable for up to twelve months from date of receipt at  $-70^{\circ}\text{C}$

### Predicted N terminal

Met

### Molecular Mass

The recombinant human APEX1 consisting of 328 amino acids and migrates as an approximately 37 kDa band in SDS-PAGE under reducing conditions as predicted.

### Formulation

- Lyophilized from sterile PBS, pH 7.5
1. 5 % trehalose and mannitol are added as protectants before lyophilization.
  2. Please contact us for any concerns or special requirements.

## Usage Guide

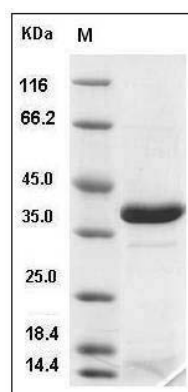
### Storage

Store it under sterile conditions at  $-20^{\circ}\text{C}$  to  $-80^{\circ}\text{C}$ . It is recommended that the protein be aliquoted for optimal storage. Avoid repeated freeze-thaw cycles.

### Reconstitution

Adding sterile water, prepare a stock solution of 0.25 mg/ml. Concentration is measured by UV-Vis.

### SDS-PAGE



Human APEX1 / AP / APEX / Ref-1 Protein (His Tag) SDS-PAGE