

Human YWHAH (GST Tag) recombinant protein



Catalog Number: 502128

General Information

Gene Name Synonym

Protein AS1

Protein Construction

A DNA sequence encoding the human YWHAH (Q04917) (Gly 2-Asn 246) was fused with the GST tag at the N-terminus.

Organism

Human

Expression Host

E. coli

QC Testing

Purity

> 90 % as determined by SDS-PAGE

Endotoxin

Please contact us for more information.

Stability

Samples are stable for up to twelve months from date of receipt at -70°C

Predicted N terminal

Met

Molecular Mass

The recombinant human YWHAH/GST chimera consists of 476 amino acids and has a predicted

molecular mass of 55 kDa as estimated in SDS-PAGE under reducing conditions.

Formulation

Lyophilized from sterile 20mM Tris, 0.15M NaCl, 20mM GST, pH 8.0

1. 5 % trehalose and mannitol are added as protectants before lyophilization.
2. Please contact us for any concerns or special requirements.

Usage Guide

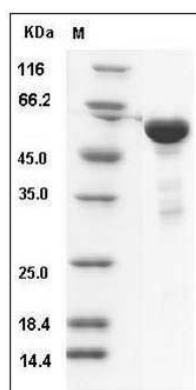
Storage

Store it under sterile conditions at -20°C to -80°C. It is recommended that the protein be aliquoted for optimal storage. Avoid repeated freeze-thaw cycles.

Reconstitution

Adding sterile water, prepare a stock solution of 0.25 mg/ml. Concentration is measured by UV-Vis.

SDS-PAGE



Human 14-3-3 eta / YWHAH Protein (GST Tag)
SDS-PAGE