

Human KLHL2 (GST Tag) recombinant protein



Catalog Number: 502070

General Information

Gene Name Synonym

Actin-binding protein Mayven

Protein Construction

A DNA sequence encoding the mature form of human KLHL2 (AAH36468.1) (Met1-Pro306) was fused with the GST tag at the N-terminus.

Organism

Human

Expression Host

E. coli

QC Testing

Purity

> 85 % as determined by SDS-PAGE

Endotoxin

Please contact us for more information.

Stability

Samples are stable for up to twelve months from date of receipt at -70°C

Predicted N terminal

Met

Molecular Mass

The recombinant human KLHL2 /GST chimera consists of 540 amino acids and has a predicted

molecular mass of 62.2 kDa. It migrates as an approximately 63 KDa band in SDS-PAGE under reducing conditions.

Formulation

Lyophilized from sterile 50mM Tris, 10% glycerol, pH 8.0

1. 5 % trehalose and mannitol are added as protectants before lyophilization.
2. Please contact us for any concerns or special requirements.

Usage Guide

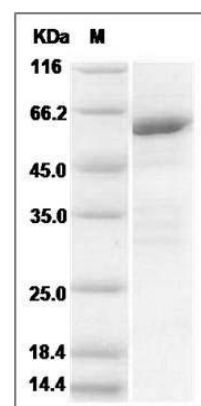
Storage

Store it under sterile conditions at -20°C to -80°C. It is recommended that the protein be aliquoted for optimal storage. Avoid repeated freeze-thaw cycles.

Reconstitution

Adding sterile water, prepare a stock solution of 0.25 mg/ml. Concentration is measured by UV-Vis.

SDS-PAGE



Human KLHL2 Protein (GST Tag) SDS-PAGE