

# Human gastric lipase / LIPF (His Tag) recombinant protein



Catalog Number: 502056

## General Information

### Protein Construction

A DNA sequence encoding the human LIPF (AAI12273.1) (Met1-Lys398) was expressed with a C-terminal polyhistidine tag.

### Organism

Human

### Expression Host

Baculovirus-Insect Cells

## QC Testing

### Purity

> 95 % as determined by SDS-PAGE

### Endotoxin

< 1.0 EU per  $\mu\text{g}$  of the protein as determined by the LAL method

### Stability

Samples are stable for up to twelve months from date of receipt at  $-70^{\circ}\text{C}$

### Predicted N terminal

Leu 20

### Molecular Mass

The secreted recombinant human LIPF consists of 389 amino acids and predicts a molecular mass of 44.6 KDa. The apparent molecular mass of the

protein is approximately 45 KDa in SDS-PAGE under reducing conditions.

### Formulation

Lyophilized from sterile PBS, pH 7.4.

1. 5 % trehalose and mannitol are added as protectants before lyophilization.

2. Please contact us for any concerns or special requirements.

## Usage Guide

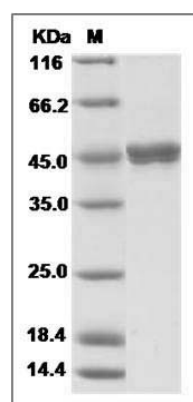
### Storage

Store it under sterile conditions at  $-20^{\circ}\text{C}$  to  $-80^{\circ}\text{C}$ . It is recommended that the protein be aliquoted for optimal storage. Avoid repeated freeze-thaw cycles.

### Reconstitution

Adding sterile water, prepare a stock solution of 0.25 mg/ml. Concentration is measured by UV-Vis.

### SDS-PAGE



Human Gastric lipase / LIPF Protein (His Tag)  
SDS-PAGE