

# Mouse SynCam/CADM1/TSLC1/IGSF4 (His Tag) recombinant protein



Catalog Number: 502036

## General Information

### Gene Name Synonym

Immunoglobulin superfamily member 4; Nectin-like protein 2; Spermatogenic immunoglobulin superfamily; Synaptic cell adhesion molecule; Tumor suppressor in lung cancer 1

### Protein Construction

A DNA sequence encoding the mouse Cadm1 (NP\_061240.3) (Met1-His377) was expressed with a polyhistidine tag at the C-terminus.

### Organism

Mouse

### Expression Host

Human Cells

## QC Testing

### Purity

> 95 % as determined by SDS-PAGE.

### Endotoxin

< 1.0 EU per  $\mu\text{g}$  protein as determined by the LAL method.

### Stability

Samples are stable for up to twelve months from date of receipt at  $-70^{\circ}\text{C}$

### Predicted N terminal

Gln 48

## Molecular Mass

The recombinant mouse Cadm1 consists 341 amino acids and predicts a molecular mass of 38.5 kDa.

### Formulation

Lyophilized from sterile PBS, pH 7.4.

1. 5 % trehalose and mannitol are added as protectants before lyophilization.

2. Please contact us for any concerns or special requirements.

## Usage Guide

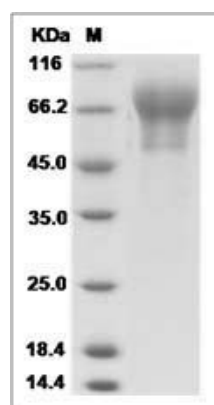
### Storage

Store it under sterile conditions at  $-20^{\circ}\text{C}$  to  $-80^{\circ}\text{C}$ . It is recommended that the protein be aliquoted for optimal storage. Avoid repeated freeze-thaw cycles.

### Reconstitution

Adding sterile water, prepare a stock solution of 0.25 mg/ml. Concentration is measured by UV-Vis.

### SDS-PAGE



Mouse SynCam / CADM1 / TSLC1 / IGSF4 Protein (His Tag)