

## General Information

### Gene Name Synonym

Small-inducible cytokine A1; T lymphocyte-secreted protein I-309

### Protein Construction

A DNA sequence encoding the human CCL1 (P22362) (Lys24-Lys96) was expressed, with a N-terminal Met.

### Organism

Human

### Expression Host

E. coli

## QC Testing

### Purity

> 95 % as determined by SDS-PAGE

### Endotoxin

Please contact us for more information.

### Stability

Samples are stable for up to twelve months from date of receipt at -70°C

### Predicted N terminal

Met

### Molecular Mass

The recombinant human CCL1 consists of 75

amino acids and predicts a molecular mass of 8.7 KDa. It migrates as an approximately 9 KDa band in SDS-PAGE under reducing conditions.

### Formulation

Lyophilized from sterile 40% acetonitrile, 0.1% TFA, 20% H<sub>2</sub>O

- 5 % trehalose and mannitol are added as protectants before lyophilization.
- Please contact us for any concerns or special requirements.

## Usage Guide

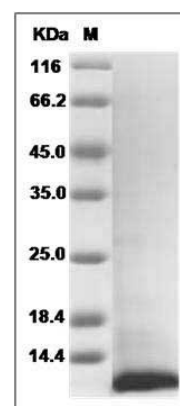
### Storage

Store it under sterile conditions at -20°C to -80°C. It is recommended that the protein be aliquoted for optimal storage. Avoid repeated freeze-thaw cycles.

### Reconstitution

Adding sterile water, prepare a stock solution of 0.25 mg/ml. Concentration is measured by UV-Vis.

### SDS-PAGE



Human I-309 / CCL1 / TCA-3 Protein SDS-PAGE