

# Canine XCL1 (His Tag) recombinant protein



Catalog Number: 502028

## General Information

### Protein Construction

A DNA sequence encoding the canine XCL1 (XP\_547477.2) (Met1-Thr112) was expressed with a C-terminal polyhistidine tag.

### Organism

Canine

### Expression Host

Baculovirus-Insect Cells

## QC Testing

### Purity

> 90 % as determined by SDS-PAGE

### Endotoxin

< 1.0 EU per  $\mu\text{g}$  of the protein as determined by the LAL method

### Stability

Samples are stable for up to twelve months from date of receipt at  $-70^{\circ}\text{C}$

### Predicted N terminal

Glu 25

### Molecular Mass

The recombinant canine XCL1 comprises 98 amino acids and has a predicted molecular mass of 11.3 kDa. The apparent molecular mass of the protein

is approximately 18-23 kDa in SDS-PAGE under reducing conditions due to glycosylation.

### Formulation

Lyophilized from sterile 20mM Tris, 500mM NaCl, 10% glycerol, pH 7.4.

1. 5 % trehalose and mannitol are added as protectants before lyophilization.

2. Please contact us for any concerns or special requirements.

## Usage Guide

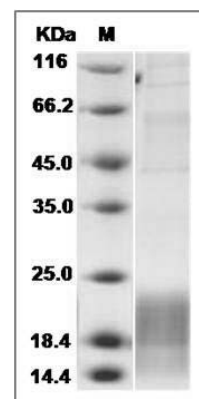
### Storage

Store it under sterile conditions at  $-20^{\circ}\text{C}$  to  $-80^{\circ}\text{C}$ . It is recommended that the protein be aliquoted for optimal storage. Avoid repeated freeze-thaw cycles.

### Reconstitution

Adding sterile water, prepare a stock solution of 0.25 mg/ml. Concentration is measured by UV-Vis.

### SDS-PAGE



Canine XCL1 Protein (His Tag) SDS-PAGE