

Human CNDP2 (His Tag) recombinant protein



Catalog Number: 501985

General Information

Gene Name Synonym:

CNDP dipeptidase 2; Glutamate carboxypeptidase-like protein 1; Peptidase A

Protein Construction:

A DNA sequence encoding the human CNDP2 (CAC69883.1) (Met 1-Asp 475) was expressed, fused with a polyhistidine tag at the C-terminus.

Source: Human

Expression Host: Baculovirus-Insect Cells

QC Testing

Activity:

Purity:

> 94 % as determined by SDS-PAGE

Endotoxin:

< 1.0 EU per µg of the protein as determined by the LAL method

Stability:

Samples are stable for up to twelve months from date of receipt at -70°C

Predicted N terminal:

Met 1

Molecular Mass:

The secreted recombinant human CNDP2 consists of 485 amino acids and predicts a molecular mass

of 54.2 kDa as estimated in SDS-PAGE under reducing conditions.

Formulation:

Lyophilized from sterile 50mM Tris, 100mM NaCl, 0.5mM PMSF, pH 8.0

1. 5 % trehalose and mannitol are added as protectants before lyophilization.

2. Please contact us for any concerns or special requirements.

Usage Guide

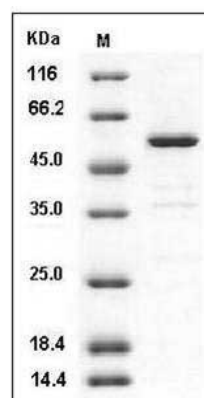
Storage:

Store it under sterile conditions at -20°C to -80°C. It is recommended that the protein be aliquoted for optimal storage. Avoid repeated freeze-thaw cycles.

Reconstitution:

Adding sterile water, prepare a stock solution of 0.25 mg/ml. Concentration is measured by UV-Vis.

SDS-PAGE:



Human CNDP2 / CPGL / PEPA Protein (His Tag)
SDS-PAGE