

# Human PKLR/Pyruvate kinase 1 (His Tag) recombinant protein



Catalog Number: 501973

## General Information

### Gene Name Synonym

Pyruvate kinase 1; Pyruvate kinase isozymes L/R; R-type/L-type pyruvate kinase; Red cell/liver pyruvate kinase

### Protein Construction

A DNA sequence encoding the human PKLR (NP\_000289.1) (Leu47-Ser574) was expressed with a polyhistidine tag at the N-terminus.

### Organism

Human

### Expression Host

E. coli

## QC Testing

### Activity

Kinase activity untested

### Purity

> 85 % as determined by SDS-PAGE

### Endotoxin

Please contact us for more information.

### Stability

Samples are stable for up to twelve months from date of receipt at -70°C

### Predicted N terminal

His

## Molecular Mass

The recombinant human PKLR consists of 546 amino acids and predicts a molecular mass of 59.1 KDa. It migrates as an approximately 53-60 KDa band in SDS-PAGE under reducing conditions.

## Formulation

Lyophilized from sterile PBS, pH 7.4.

1. 5 % trehalose and mannitol are added as protectants before lyophilization.
2. Please contact us for any concerns or special requirements.

## Usage Guide

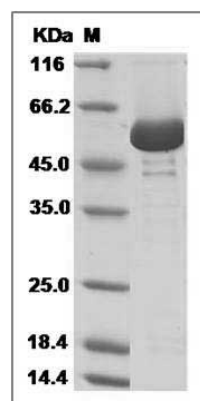
### Storage

Store it under sterile conditions at -20°C to -80°C. It is recommended that the protein be aliquoted for optimal storage. Avoid repeated freeze-thaw cycles.

### Reconstitution

Adding sterile water, prepare a stock solution of 0.25 mg/ml. Concentration is measured by UV-Vis.

## SDS-PAGE



Human PKLR / PKRL Protein (His Tag) SDS-PAGE