

Mouse IGFBP6 / IBP6 (His Tag) recombinant protein



Catalog Number: 501970

General Information

Protein Construction

A DNA sequence encoding the mouse IGFBP6 (NP_032370.2) (Met 1-Gly 238) was expressed, with a polyhistidine tag at the C-terminus.

Organism

Mouse

Expression Host

Human Cells

QC Testing

Activity

Measured by its ability to inhibit the biological activity of IGFI or IGFII on MCF7 human breast adenocarcinoma cells (Karey, K.P. et al. (1988) Cancer Research 48:4083.). The ED₅₀ for this effect is typically 1-4 µg/ml in the presence of 20 ng/mL mouse IGFII.

Purity

> 92 % as determined by SDS-PAGE

Endotoxin

< 1.0 EU per µg of the protein as determined by the LAL method

Stability

Samples are stable for up to twelve months from date of receipt at -70°C

Predicted N terminal

Gln 20

Molecular Mass

The recombinant mouse IGFBP6 consists of 224 amino acids and has a predicted molecular mass of 24 kDa. In SDS-PAGE under reducing conditions, the apparent molecular mass of rmIGFBP6 is approximately 30 kDa due to glycosylation.

Formulation

Lyophilized from sterile PBS, pH 7.4

1. 5 % trehalose and mannitol are added as protectants before lyophilization.

2. Please contact us for any concerns or special requirements.

Usage Guide

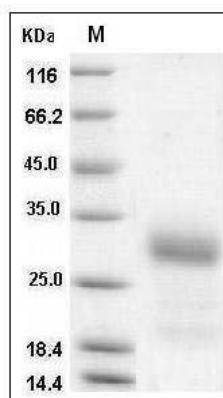
Storage

Store it under sterile conditions at -20°C to -80°C. It is recommended that the protein be aliquoted for optimal storage. Avoid repeated freeze-thaw cycles.

Reconstitution

Adding sterile water, prepare a stock solution of 0.25 mg/ml. Concentration is measured by UV-Vis.

SDS-PAGE



Mouse IGFBP6 / IBP-6 Protein (His Tag) SDS-PAGE