

Human UBE2G1 recombinant protein



Catalog Number: 501943

General Information

Gene Name Synonym

E217K; UBC7; Ubiquitin carrier protein G1; Ubiquitin-protein ligase G1; Ubiquitin-conjugating enzyme E2 G1, N-terminally processed

Protein Construction

A DNA sequence encoding the human UBE2G1 (P62253) (Met 1-Glu 170) was expressed and purified, with additional two amino acids (Gly & Pro) at the N-terminus.

Organism

Human

Expression Host

E. coli

QC Testing

Purity

> 85 % as determined by SDS-PAGE

Endotoxin

Please contact us for more information.

Stability

Samples are stable for up to twelve months from date of receipt at -70°C

Predicted N terminal

Gly

Molecular Mass

The recombinant human UBE2G1 consists of 172 amino acids and has a calculated molecular mass of 19.5 kDa as estimated in SDS-PAGE under reducing conditions.

Formulation

Lyophilized from sterile PBS, 10% glycerol, pH 7.5
1. 5 % trehalose and mannitol are added as protectants before lyophilization.

2. Please contact us for any concerns or special requirements.

Usage Guide

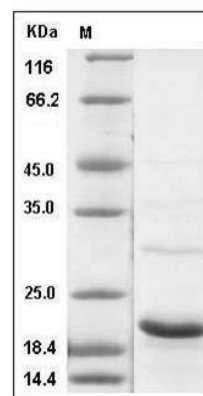
Storage

Store it under sterile conditions at -20°C to -80°C. It is recommended that the protein be aliquoted for optimal storage. Avoid repeated freeze-thaw cycles.

Reconstitution

Adding sterile water, prepare a stock solution of 0.25 mg/ml. Concentration is measured by UV-Vis.

SDS-PAGE



Human UBE2G1 Protein SDS-PAGE