

Human FAM3C / ILEI (Fc Tag) recombinant protein



Catalog Number: 501894

General Information

Gene Name Synonym

Interleukin-like EMT inducer

Protein Construction

A DNA sequence encoding the human FAM3C (Q92520)(Met1-Asp227) was expressed with the Fc region of human IgG1 at the C-terminus.

Organism

Human

Expression Host

Human Cells

QC Testing

Purity

(73.6+19.1) % as determined by SDS-PAGE

Endotoxin

< 1.0 EU per μg of the protein as determined by the LAL method

Stability

Samples are stable for up to twelve months from date of receipt at -70°C

Predicted N terminal

Gln 25

Molecular Mass

The recombinant human FAM3C/Fc is a disulfide-

linked homodimer. The reduced monomer comprises 444 amino acids and has a predicted molecular mass of 49.2 kDa. The apparent molecular mass of the protein is approximately 53 and 35 kDa in SDS-PAGE under reducing conditions.

Formulation

Lyophilized from sterile PBS, pH 7.4.

1. 5 % trehalose and mannitol are added as protectants before lyophilization.

2. Please contact us for any concerns or special requirements.

Usage Guide

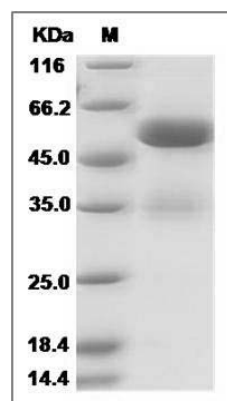
Storage

Store it under sterile conditions at -20°C to -80°C . It is recommended that the protein be aliquoted for optimal storage. Avoid repeated freeze-thaw cycles.

Reconstitution

Adding sterile water, prepare a stock solution of 0.25 mg/ml. Concentration is measured by UV-Vis.

SDS-PAGE



Human FAM3C / ILEI Protein (Fc Tag) SDS-PAGE