

## General Information

### Gene Name Synonym

Brain-specific transmembrane protein containing 2 CUB and 1 LDL-receptor class A domains protein 1

### Protein Construction

A DNA sequence encoding the human NETO1 isoform 3 (NP\_620416.1) extracellular domain (Met 1-Thr 344) was fused with a polyhistidine tag at the C-terminus.

### Organism

Human

### Expression Host

Human Cells

## QC Testing

### Purity

> 95 % as determined by SDS-PAGE

### Endotoxin

< 1.0 EU per  $\mu\text{g}$  of the protein as determined by the LAL method

### Stability

Samples are stable for up to twelve months from date of receipt at  $-70^{\circ}\text{C}$

### Predicted N terminal

Thr 23

### Molecular Mass

The secreted recombinant human NETO1 consists of 333 amino acids and has a calculated molecular mass of 38 kDa. It migrates as an approximately 46 kDa band in SDS-PAGE under reducing conditions due to glycosylation.

### Formulation

Lyophilized from sterile PBS, pH 7.4

1. 5 % trehalose and mannitol are added as protectants before lyophilization.
2. Please contact us for any concerns or special requirements.

## Usage Guide

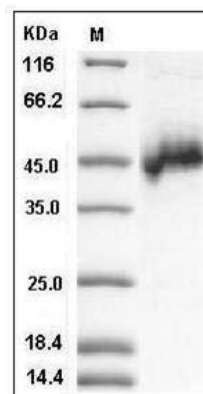
### Storage

Store it under sterile conditions at  $-20^{\circ}\text{C}$  to  $-80^{\circ}\text{C}$ . It is recommended that the protein be aliquoted for optimal storage. Avoid repeated freeze-thaw cycles.

### Reconstitution

Adding sterile water, prepare a stock solution of 0.25 mg/ml. Concentration is measured by UV-Vis.

### SDS-PAGE



Human NETO1 / BTCL1 Protein (His Tag) SDS-PAGE