

## General Information

### Gene Name Synonym

Group XIIB secretory phospholipase A2-like protein; Phospholipase A2, group XIIB; Phospholipase A2, group XIIB, isoform CRA\_a

### Protein Construction

A DNA sequence encoding the mouse PLA2G12B (NP\_076019.2) (Met 1-Leu 195) was expressed, with a C-terminal polyhistidine tag.

### Organism

Mouse

### Expression Host

Human Cells

## QC Testing

### Purity

> 95 % as determined by SDS-PAGE

### Endotoxin

< 1.0 EU per  $\mu\text{g}$  of the protein as determined by the LAL method

### Stability

Samples are stable for up to twelve months from date of receipt at  $-70^{\circ}\text{C}$

### Predicted N terminal

Gln 20

### Molecular Mass

The secreted recombinant mouse PLA2G12B

comprises 187 amino acids and has a calculated molecular mass of 21 kDa. The apparent molecular mass of the recombinant protein is approximately 24 kDa in SDS-PAGE under reducing conditions.

### Formulation

Lyophilized from sterile 20mM NaAc, 100mM NaCl, pH 5.0

1. 5 % trehalose and mannitol are added as protectants before lyophilization.

2. Please contact us for any concerns or special requirements.

## Usage Guide

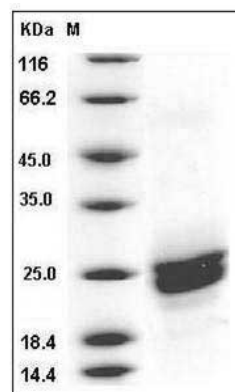
### Storage

Store it under sterile conditions at  $-20^{\circ}\text{C}$  to  $-80^{\circ}\text{C}$ . It is recommended that the protein be aliquoted for optimal storage. Avoid repeated freeze-thaw cycles.

### Reconstitution

Adding sterile water, prepare a stock solution of 0.25 mg/ml. Concentration is measured by UV-Vis.

### SDS-PAGE



Mouse PLA2G12B / PLA2G13 Protein (His Tag)  
SDS-PAGE