

## General Information

### Gene Name Synonym

Meltrin-alpha

### Protein Construction

A DNA sequence encoding the human ADAM12 isoform 1 (NP\_003465.3) extracellular domain (Met 1-Ser 513) was fused with a polyhistidine tag at the C-terminus.

### Organism

Human

### Expression Host

Human Cells

## QC Testing

### Activity

Measured by its binding ability in a functional ELISA.

Immobilized human ADAM12-His (Cat: 501814) at 10 µg/ml (100 µl/well) can bind biotinylated mouse FLRG-His (Cat: 10591-M08H) with a linear range of 0.31-1.25 µg/ml.

### Purity

> 98 % as determined by SDS-PAGE

### Endotoxin

< 1.0 EU per µg of the protein as determined by the LAL method

### Stability

Samples are stable for up to twelve months from date of receipt at -70°C

### Predicted N terminal

Arg 29

## Molecular Mass

The recombinant human ADAM12 consists of 496 amino acids and predicts a molecular mass of 55.2 kDa. As a result of glycosylation, rhADAM12 migrates as three bands with apparent molecular mass of 27, 55 and 72 kDa corresponding to the propeptide, the mature form and the pro form respectively in SDS-PAGE under reducing conditions.

## Formulation

Lyophilized from sterile PBS, pH 7.4

1. 5 % trehalose and mannitol are added as protectants before lyophilization.

2. Please contact us for any concerns or special requirements.

## Usage Guide

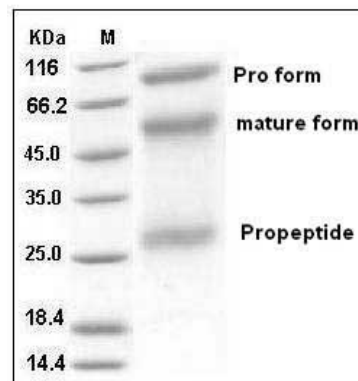
### Storage

Store it under sterile conditions at -20°C to -80°C. It is recommended that the protein be aliquoted for optimal storage. Avoid repeated freeze-thaw cycles.

### Reconstitution

Adding sterile water, prepare a stock solution of 0.25 mg/ml. Concentration is measured by UV-Vis.

## SDS-PAGE



Human ADAM12 Protein (His Tag) SDS-PAGE