

## General Information

### Gene Name Synonym

CD200 cell surface glycoprotein receptor-like 2;  
CD200 cell surface glycoprotein receptor-like a;  
Cell surface glycoprotein CD200 receptor 1-like;  
Cell surface glycoprotein OX2 receptor 2

### Protein Construction

A DNA sequence encoding the human CD200R1L (AAT00538.1) extracellular domain (Met1-Leu239) was expressed, fused with a polyhistidine tag at the C-terminus.

### Organism

Human

### Expression Host

Human Cells

## QC Testing

### Purity

> 95 % as determined by SDS-PAGE

### Endotoxin

< 1.0 EU per  $\mu\text{g}$  of the protein as determined by the LAL method

### Stability

Samples are stable for up to twelve months from date of receipt at  $-70^{\circ}\text{C}$

### Predicted N terminal

Gly 24

### Molecular Mass

The recombinant human CD200R1L consists of 227 amino acids and predicts a molecular mass of 25.2 kDa. In SDS-PAGE under reducing conditions, the apparent molecular mass of rh CD200R1L is approximately 45-60 kDa due to glycosylation.

### Formulation

Lyophilized from sterile PBS, pH 7.4

1. 5 % trehalose and mannitol are added as protectants before lyophilization.

2. Please contact us for any concerns or special requirements.

## Usage Guide

### Storage

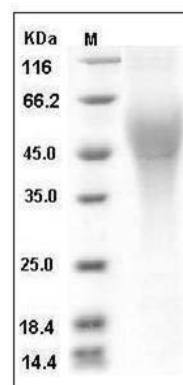
Store it under sterile conditions at  $-20^{\circ}\text{C}$  to  $-80^{\circ}\text{C}$ .

It is recommended that the protein be aliquoted for optimal storage. Avoid repeated freeze-thaw cycles.

### Reconstitution

Adding sterile water, prepare a stock solution of 0.25 mg/ml. Concentration is measured by UV-Vis.

### SDS-PAGE



Human CD200R1L / CD200R2 / CD200RLa Protein (His Tag) SDS-PAGE