

## General Information

### Gene Name Synonym

Protein Serpinb6b; Serine (Or cysteine) peptidase inhibitor, clade B, member 6b; Serine (Or cysteine) peptidase inhibitor, clade B, member 6b, isoform CRA\_a

### Protein Construction

A DNA sequence encoding the mouse SERPINB6B (NP\_035584.1) (Met 1-Pro 377) was expressed with a polyhistidine tag at the C-terminus.

### Organism

Mouse

### Expression Host

Baculovirus-Insect Cells

## QC Testing

### Purity

> 92 % as determined by SDS-PAGE

### Endotoxin

< 1.0 EU per  $\mu\text{g}$  of the protein as determined by the LAL method

### Stability

Samples are stable for up to twelve months from date of receipt at  $-70^{\circ}\text{C}$

### Predicted N terminal

Met 1

### Molecular Mass

The recombinant mouse SERPINB6B consists of 387 amino acids and has a calculated molecular mass of 44 kDa. It migrates as an approximately 43 kDa band in SDS-PAGE under reducing conditions.

### Formulation

Lyophilized from sterile 50mM Tris, 100mM NaCl, pH 7.0, 10% gly

1. 5 % trehalose and mannitol are added as protectants before lyophilization.
2. Please contact us for any concerns or special requirements.

## Usage Guide

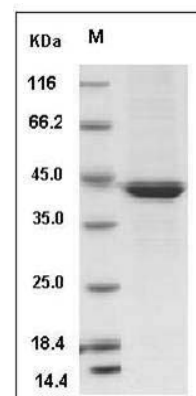
### Storage

Store it under sterile conditions at  $-20^{\circ}\text{C}$  to  $-80^{\circ}\text{C}$ . It is recommended that the protein be aliquoted for optimal storage. Avoid repeated freeze-thaw cycles.

### Reconstitution

Adding sterile water, prepare a stock solution of 0.25 mg/ml. Concentration is measured by UV-Vis.

### SDS-PAGE



Mouse Serpinb6b Protein (His Tag) SDS-PAGE