

Human Lysozyme G-like 1 (His Tag) recombinant protein



Catalog Number: 501766

General Information

Protein Construction

A DNA sequence encoding the human LYG1 (Met 1-Phe194) (Q8N1E2) was expressed, with a C-terminal polyhistidine tag.

Organism

Human

Expression Host

Baculovirus-Insect Cells

QC Testing

Purity

> 90 % as determined by SDS-PAGE

Endotoxin

< 1.0 EU per μg of the protein as determined by the LAL method

Stability

Samples are stable for up to twelve months from date of receipt at -70°C

Predicted N terminal

Ser 2

Molecular Mass

The secreted recombinant human LYG1 consists of 185 amino acids and predicts a molecular mass of 20.7 KDa. The apparent molecular mass of the protein is approximately 22 Kda in SDS-PAGE

under reducing conditions due to glycosylation.

Formulation

Lyophilized from sterile 20mM Tris, 500mM NaCl, pH 7.4, 20% gly

1. 5 % trehalose and mannitol are added as protectants before lyophilization.

2. Please contact us for any concerns or special requirements.

Usage Guide

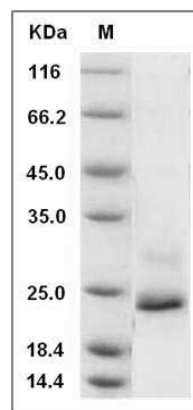
Storage

Store it under sterile conditions at -20°C to -80°C . It is recommended that the protein be aliquoted for optimal storage. Avoid repeated freeze-thaw cycles.

Reconstitution

Adding sterile water, prepare a stock solution of 0.25 mg/ml. Concentration is measured by UV-Vis.

SDS-PAGE



Human Lysozyme G-like 1 / LYG1 Protein (His Tag) SDS-PAGE