

# Human CLEC1B/CLEC2 (His Tag) recombinant protein



Catalog Number: 501731

## General Information

### Gene Name Synonym

C-type lectin-like receptor 2

### Protein Construction

A DNA sequence encoding the human CLEC1B (NP\_057593.3) extracellular domain (Gln 58-Pro 229) with a N-terminal polyhistidine tag was expressed.

### Organism

Human

### Expression Host

Human Cells

## QC Testing

### Activity

1. Measured by its binding ability in a functional ELISA.
2. Immobilized human Podoplanin (Cat: 504047) at 10 µg/mL (100 µl/well) can bind biotinylated human CLEC1B-His, The EC<sub>50</sub> of biotinylated human CLEC1B-His is 0.71 µg/mL.

### Purity

> 76 % as determined by SDS-PAGE

### Endotoxin

< 1.0 EU per µg of the protein as determined by the LAL method

### Stability

Samples are stable for up to twelve months from date of receipt at -70°C

### Predicted N terminal

His

### Molecular Mass

The recombinant human CLEC1B comprises 188 amino acids with a predicted molecular mass of 22.7 kDa. As a result of glycosylation, the apparent molecular mass of rh CLEC1B is approximately 35-38 kDa in SDS-PAGE under reducing conditions.

### Formulation

Lyophilized from sterile PBS, pH 7.4

1. 5 % trehalose and mannitol are added as protectants before lyophilization.

2. Please contact us for any concerns or special requirements.

## Usage Guide

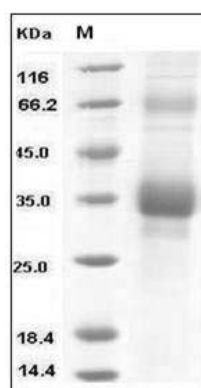
### Storage

Store it under sterile conditions at -20°C to -80°C. It is recommended that the protein be aliquoted for optimal storage. Avoid repeated freeze-thaw cycles.

### Reconstitution

Adding sterile water, prepare a stock solution of 0.25 mg/ml. Concentration is measured by UV-Vis.

### SDS-PAGE



Human CLEC1B / CLEC2 Protein (His Tag) SDS-PAGE