

RVFV L protein / RVFV-L (His Tag)



Catalog Number: 501706

General Information

Protein Construction

A DNA sequence encoding the Rift Valley fever virus(TAN/Dod-002/07) L (AEB20483.1) (Met1-Phe250) was expressed with a polyhistidine tag at the C-terminus.

Organism

RVFV

Expression Host

E. coli

QC Testing

Purity

> 95 % as determined by SDS-PAGE.

Endotoxin

Please contact us for more information.

Stability

Samples are stable for up to twelve months from date of receipt at -70°C

Predicted N terminal

Met

Molecular Mass

The recombinant Rift Valley fever

virus(TAN/Dod-002/07) L consists 256 amino acids and predicts a molecular mass of 29.4 kDa.

Formulation

Lyophilized from sterile PBS, pH 7.4.

1. 5 % trehalose and mannitol are added as protectants before lyophilization.

2. Please contact us for any concerns or special requirements.

Usage Guide

Storage

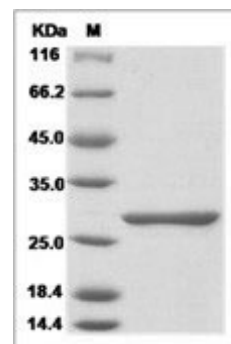
Store it under sterile conditions at -20°C to -80°C.

It is recommended that the protein be aliquoted for optimal storage. Avoid repeated freeze-thaw cycles.

Reconstitution

Adding sterile water, prepare a stock solution of 0.25 mg/ml. Concentration is measured by UV-Vis.

SDS-PAGE



Rift Valley fever virus (TAN/Dod-002/07) RVFV-L Protein (His Tag)