

Human Prostasin/PRSS8 (His Tag) recombinant protein



Catalog Number: 501705

General Information

Gene Name Synonym

Channel-activating protease 1; Serine protease 8; Prostasin light chain; Prostasin heavy chain

Protein Construction

A DNA sequence encoding the mature form of human Prss8 (NP_002764.1) (Ala 30-Arg 322) was fused with a signal peptide at the N-terminus and a polyhistidine-tag at the C-terminus.

Organism

Human

Expression Host

Human Cells

QC Testing

Activity

Measured by its ability to cleave the fluorogenic peptide substrate Boc-QAR-AMC (R&D Systems, Catalog # ES014). The specific activity is >10 pmoles/min/μg.

Purity

> 97 % as determined by SDS-PAGE

Endotoxin

< 1.0 EU per μg of the protein as determined by the LAL method

Stability

Samples are stable for up to twelve months from date of receipt at -70°C

Predicted N terminal

Ala 30

Molecular Mass

The mature recombinant human Prss8 consists of 304 amino acids and predicts a molecular mass of 32.8 kDa. By SDS-PAGE under reducing conditions, the apparent molecular mass of rhPrss8 is approximately 40 kDa due to glycosylation.

Formulation

Lyophilized from sterile PBS, pH 7.4

1. 5 % trehalose and mannitol are added as protectants before lyophilization.

2. Please contact us for any concerns or special requirements.

Usage Guide

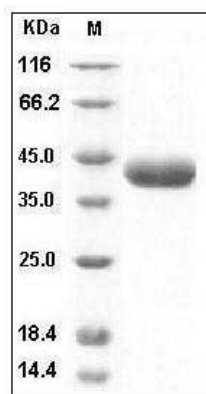
Storage

Store it under sterile conditions at -20°C to -80°C. It is recommended that the protein be aliquoted for optimal storage. Avoid repeated freeze-thaw cycles.

Reconstitution

Adding sterile water, prepare a stock solution of 0.25 mg/ml. Concentration is measured by UV-Vis.

SDS-PAGE



Human Prostasin / Prss8 Protein (His Tag) SDS-PAGE