

# Human Cadherin-17/LI-cadherin (His Tag) recombinant protein



Catalog Number: 501695

## General Information

### Gene Name Synonym

Intestinal peptide-associated transporter HPT-1;  
Liver-intestine cadherin

### Protein Construction

A DNA sequence encoding the human CDH17 (Q12864-1) extracellular domain (Met 1-Met 787) was expressed, fused with a polyhistidine tag at the C-terminus.

### Organism

Human

### Expression Host

Human Cells

## QC Testing

### Activity

Measured by the ability of the immobilized protein to support the adhesion of MCF-7 human breast adenocarcinoma cells. When 5 x 10<sup>4</sup> cells/well are added to Recombinant Human Cadherin-17 coated plates (5 µg/mL with 100 µL/well), approximately > 30% will adhere after 1 hour at 37°C.

### Purity

> 88 % as determined by SDS-PAGE

### Endotoxin

< 1.0 EU per µg of the protein as determined by the LAL method

### Stability

Samples are stable for up to twelve months from date of receipt at -70°C

### Predicted N terminal

Gln 23

### Molecular Mass

The recombinant human CDH17 consists of 776 amino acids and predicts a molecular mass of 87 kDa. In SDS-PAGE under reducing conditions, the apparent molecular mass of rh CDH17 is approximately 105-115 kDa due to glycosylation.

### Formulation

Lyophilized from sterile PBS, pH 7.4

1. 5 % trehalose and mannitol are added as protectants before lyophilization.
2. Please contact us for any concerns or special requirements.

## Usage Guide

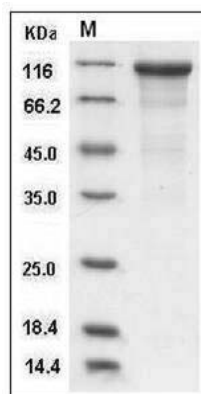
### Storage

Store it under sterile conditions at -20°C to -80°C. It is recommended that the protein be aliquoted for optimal storage. Avoid repeated freeze-thaw cycles.

### Reconstitution

Adding sterile water, prepare a stock solution of 0.25 mg/ml. Concentration is measured by UV-Vis.

### SDS-PAGE



Human Cadherin-17 / LI-cadherin / CDH17 Protein (His Tag) SDS-PAGE