

## General Information

### Gene Name Synonym

Putative uncharacterized protein  
DKFZp686L24211; cDNA FLJ59887, moderately similar to Homo sapiens C-type lectin domain family 7, member A (CLEC7A), transcript variant 4

### Protein Construction

A DNA sequence encoding the extracellular domain of the human Dectin1 (NP\_072092.2) (Thr66-Met201) was expressed.

### Organism

Human

### Expression Host

Human Cells

## QC Testing

### Purity

> 90 % as determined by SDS-PAGE

### Endotoxin

< 1.0 EU per  $\mu\text{g}$  of the protein as determined by the LAL method

### Stability

Samples are stable for up to twelve months from date of receipt at  $-70^{\circ}\text{C}$

### Predicted N terminal

Thr 66

### Molecular Mass

The recombinant human Dectin1 comprises 136 amino acids and has a predicted molecular mass of 15.5 kDa. The apparent molecular mass of the monomer is approximately 15 kDa in SDS-PAGE under reducing conditions.

### Formulation

Lyophilized from sterile PBS, pH 7.4.

1. 5 % trehalose and mannitol are added as protectants before lyophilization.
2. Please contact us for any concerns or special requirements.

## Usage Guide

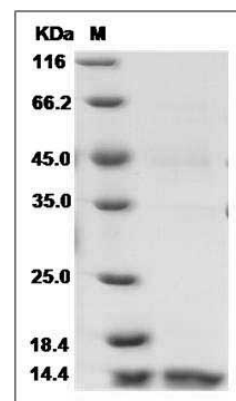
### Storage

Store it under sterile conditions at  $-20^{\circ}\text{C}$  to  $-80^{\circ}\text{C}$ . It is recommended that the protein be aliquoted for optimal storage. Avoid repeated freeze-thaw cycles.

### Reconstitution

Adding sterile water, prepare a stock solution of 0.25 mg/ml. Concentration is measured by UV-Vis.

### SDS-PAGE



Human CLEC7A / Dectin-1 / CLECSF12 Protein  
SDS-PAGE