

# Human SLPI (His Tag) recombinant protein



Catalog Number: 501659

## General Information

### Gene Name Synonym

BLPI; HUSI-1; Mucus proteinase inhibitor; Protease inhibitor WAP4; Secretory leukocyte protease inhibitor; Seminal proteinase inhibitor; WAP four-disulfide core domain protein 4

### Protein Construction

A DNA sequence encoding the secreted form of human SLPI (P03973) (Ser 26-Ala 132) was expressed, with a polyhistidine tag at the N-terminus.

### Organism

Human

### Expression Host

Baculovirus-Insect Cells

## QC Testing

### Activity

Measured by its ability to inhibit trypsin cleavage of a fluorogenic peptide substrate, Mca-RPKPVE-Nval-WRK (Dnp)-NH<sub>2</sub> (Catalog # ES002). The IC<sub>50</sub> value is <4 Nm.

### Purity

> 84 % as determined by SDS-PAGE

### Endotoxin

< 1.0 EU per µg of the protein as determined by the LAL method

### Stability

Samples are stable for up to twelve months from date of receipt at -70°C

### Predicted N terminal

Met

### Molecular Mass

The recombinant human SLPI consists of 126 amino acids and predicts a molecular mass of 14 kDa. It migrates as an approximately 19 kDa band in SDS-PAGE under reducing conditions.

### Formulation

Lyophilized from sterile 20mM Tris, 500mM NaCl, pH 7.4, 10% gly  
1. 5 % trehalose and mannitol are added as protectants before lyophilization.  
2. Please contact us for any concerns or special requirements.

## Usage Guide

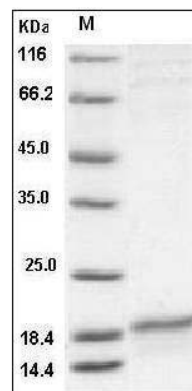
### Storage

Store it under sterile conditions at -20°C to -80°C. It is recommended that the protein be aliquoted for optimal storage. Avoid repeated freeze-thaw cycles.

### Reconstitution

Adding sterile water, prepare a stock solution of 0.25 mg/ml. Concentration is measured by UV-Vis.

### SDS-PAGE



Human SLPI Protein (His Tag) SDS-PAGE