

Human CSAGE/CSAG1 (Fc Tag) recombinant protein



Catalog Number: 501651

General Information

Gene Name Synonym

Cancer/testis antigen 24.1; Cancer/testis antigen CSAGE

Protein Construction

A DNA sequence encoding the human CSAG1 (AAH59947.1) (Asp20-Pro78) was fused with the Fc region of human IgG1 at the N-terminus.

Organism

Human

Expression Host

Human Cells

QC Testing

Purity

> 90 % as determined by SDS-PAGE

Endotoxin

< 1.0 EU per μg of the protein as determined by the LAL method

Stability

Samples are stable for up to twelve months from date of receipt at -70°C

Predicted N terminal

Glu

Molecular Mass

The recombinant human CSAG1/Fc chimera is a disulfide-linked homodimeric protein. The reduced

monomer consists of 320 amino acids and has a calculated molecular mass of 35.2 kDa. In SDS-PAGE under reducing conditions, the apparent molecular mass of rhCSAG1/Fc monomer is approximately 37 kDa.

Formulation

Lyophilized from sterile PBS, pH 7.4

1. 5 % trehalose and mannitol are added as protectants before lyophilization.

2. Please contact us for any concerns or special requirements.

Usage Guide

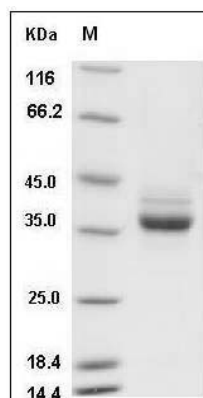
Storage

Store it under sterile conditions at -20°C to -80°C . It is recommended that the protein be aliquoted for optimal storage. Avoid repeated freeze-thaw cycles.

Reconstitution

Adding sterile water, prepare a stock solution of 0.25 mg/ml. Concentration is measured by UV-Vis.

SDS-PAGE



Human CSAGE / CSAG1 Protein (Fc Tag) SDS-PAGE