

General Information

Protein Construction

A DNA sequence encoding the HIV-1 envelope glycoprotein gp160 (AFM77980.1) extracellular domain (Ala 29-Glu 503), termed as gp120, was fused with a polyhistidine tag at the C-terminus.

Organism

HIV

Expression Host

Human Cells

QC Testing

Purity

> 95 % as determined by SDS-PAGE

Endotoxin

< 1.0 EU per μg of the protein as determined by the LAL method

Stability

Samples are stable for up to twelve months from date of receipt at -70°C

Predicted N terminal

Ala 29

Molecular Mass

The recombinant HIV-1 gp120 consists of 486 amino acids after removal of the signal peptide and has a predicted molecular mass of 54.6 kDa.

The apparent molecular mass of the recombinant protein is approximately 80-100 kDa in SDS-PAGE under reducing conditions.

Formulation

Lyophilized from sterile PBS, pH 7.4

1. 5 % trehalose and mannitol are added as protectants before lyophilization.

2. Please contact us for any concerns or special requirements.

Usage Guide

Storage

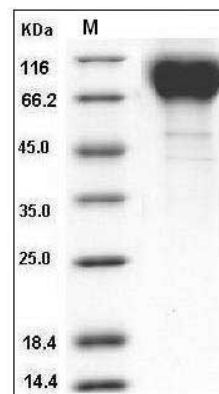
Store it under sterile conditions at -20°C to -80°C .

It is recommended that the protein be aliquoted for optimal storage. Avoid repeated freeze-thaw cycles.

Reconstitution

Adding sterile water, prepare a stock solution of 0.25 mg/ml. Concentration is measured by UV-Vis.

SDS-PAGE



Human Immunodeficiency Virus type 1 (HIV-1) gp120 / SU Protein (His Tag) SDS-PAGE