

Human E-Selectin/CD62e/SELE (His Tag) recombinant protein



Catalog Number: 501593

General Information

Gene Name Synonym

CD62 antigen-like family member E; Endothelial leukocyte adhesion molecule 1; Leukocyte-endothelial cell adhesion molecule 2

Protein Construction

A DNA sequence encoding the extracellular domain (Met 1-Pro 556) of human CD62E (NP_000441.2) precursor was expressed with the fused C-terminal polyhistidine tag.

Organism

Human

Expression Host

Human Cells

QC Testing

Purity

> 97 % as determined by SDS-PAGE

Endotoxin

< 1.0 EU per μg of the protein as determined by the LAL method

Stability

Samples are stable for up to twelve months from date of receipt at -70°C

Predicted N terminal

Trp 22

Molecular Mass

The recombinant human CD62E comprises 546 amino acids after removal of the signal peptide and has a predicted molecular mass of 60 kDa. In SDS-PAGE under reducing conditions, the apparent molecular mass of rh CD62E is approximately 110 kDa due to glycosylation.

Formulation

Lyophilized from sterile PBS, pH 7.4

1. 5 % trehalose and mannitol are added as protectants before lyophilization.

2. Please contact us for any concerns or special requirements.

Usage Guide

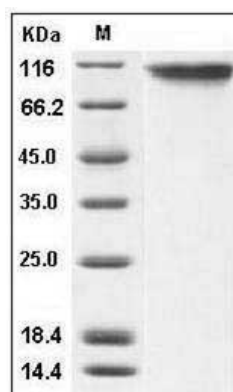
Storage

Store it under sterile conditions at -20°C to -80°C . It is recommended that the protein be aliquoted for optimal storage. Avoid repeated freeze-thaw cycles.

Reconstitution

Adding sterile water, prepare a stock solution of 0.25 mg/ml. Concentration is measured by UV-Vis.

SDS-PAGE



Human E-Selectin / CD62e / SELE Protein (His Tag) SDS-PAGE