

# Human IL-25 (Fc Tag) recombinant protein



Catalog Number: 501585

## General Information

### Gene Name Synonym

Interleukin-17E

### Protein Construction

A DNA sequence encoding the mature form of human IL25 (Tyr 33-Gly177) (NP\_073626.1) was fused with the Fc region of human IgG1 at the N-terminus via a polypeptide linker.

### Organism

Human

### Expression Host

Human Cells

## QC Testing

### Activity

Measured by its binding ability in a functional ELISA.

Immobilized human IL17BR-His (Cat:503945) at 10 µg/ml (100 µl/well) can bind human Fc-IL25 (Cat:501585), The EC<sub>50</sub> of human Fc-IL25 (Cat:501585) is 1.7-4.2 µg/ml.

### Purity

> 95 % as determined by SDS-PAGE

### Endotoxin

< 1.0 EU per µg of the protein as determined by the LAL method

### Stability

Samples are stable for up to twelve months from date of receipt at -70°C

### Predicted N terminal

Glu 20

### Molecular Mass

The recombinant human IL25/Fc chimera is a disulfide-linked homodimeric protein. The reduced monomer consists of 403 amino acids and predicts a molecular mass of 45 KDa. As a result of glycosylation, the apparent molecular mass of rh IL25/Fc monomer is approximately 50-60 KDa in SDS-PAGE under reducing conditions.

### Formulation

Lyophilized from sterile PBS , pH 7.4

1. 5 % trehalose and mannitol are added as protectants before lyophilization.

2. Please contact us for any concerns or special requirements.

## Usage Guide

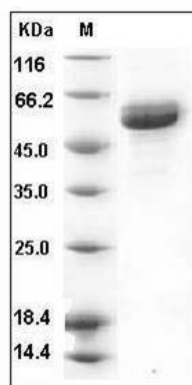
### Storage

Store it under sterile conditions at -20°C to -80°C. It is recommended that the protein be aliquoted for optimal storage. Avoid repeated freeze-thaw cycles.

### Reconstitution

Adding sterile water, prepare a stock solution of 0.25 mg/ml. Concentration is measured by UV-Vis.

### SDS-PAGE



Human IL25 Protein (Fc Tag) SDS-PAGE