

Mouse REG4 (His Tag) recombinant protein



Catalog Number: 501575

General Information

Protein Construction

A DNA sequence encoding mouse REG4 (NP_080604.2) (Met 1-Thr 157) was expressed with the polyhistidine tag at the C-terminus.

Organism

Mouse

Expression Host

Human Cells

QC Testing

Activity

Measured by the ability of the immobilized protein to support the adhesion and proliferation of HCT-116 human colorectal carcinoma cells (ATCC: CCL-247) under low serum conditions. When 5 x 10⁴ cells/well are added to mouse REG4 coated plates (0.16 µg/ml and 100 µl/well), >70% cell will adhere after 60 minutes at 37°C.

Purity

> 95 % as determined by SDS-PAGE

Endotoxin

< 1.0 EU per µg of the protein as determined by the LAL method

Stability

Samples are stable for up to twelve months from date of receipt at -70°C

Predicted N terminal

Asp 23

Molecular Mass

The recombinant mouse REG4 comprises 146 amino acids and has a predicted molecular mass of 17.5 kDa. In SDS-PAGE under reducing conditions, the apparent molecular mass of rm REG4 is approximately 23-30 kDa due to glycosylation.

Formulation

Lyophilized from sterile PBS, pH 7.4

1. 5 % trehalose and mannitol are added as protectants before lyophilization.

2. Please contact us for any concerns or special requirements.

Usage Guide

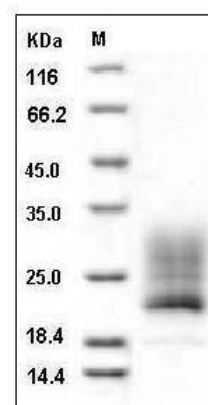
Storage

Store it under sterile conditions at -20°C to -80°C. It is recommended that the protein be aliquoted for optimal storage. Avoid repeated freeze-thaw cycles.

Reconstitution

Adding sterile water, prepare a stock solution of 0.25 mg/ml. Concentration is measured by UV-Vis.

SDS-PAGE



Mouse REG4 / GISP / RELP Protein (His Tag) SDS-PAGE