

General Information

Gene Name Synonym

Interleukin 2 receptor, gamma (Severe combined immunodeficiency), isoform CRA_a; Protein IL2rg

Protein Construction

A DNA sequence encoding the rat IL2RG (Q68FU6) (Met1-Ala262) was expressed, fused with the Fc region of human IgG1 at the C-terminus.

Organism

Rat

Expression Host

Human Cells

QC Testing

Purity

> 65 % as determined by SDS-PAGE

Endotoxin

< 1.0 EU per μ g of the protein as determined by the LAL method

Stability

Samples are stable for up to twelve months from date of receipt at -70°C

Predicted N terminal

Ser 25

Molecular Mass

The recombinant rat IL2RG/Fc is a disulfide-linked

homodimer. The reduced monomer comprises 479 amino acids and predicts a molecular mass of 55 kDa. The apparent molecular mass of the recombinant protein is approximately 67 kDa in SDS-PAGE under reducing conditions due to glycosylation.

Formulation

Lyophilized from sterile PBS, pH 7.4

1. 5 % trehalose and mannitol are added as protectants before lyophilization.

2. Please contact us for any concerns or special requirements.

Usage Guide

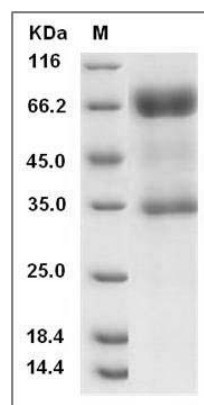
Storage

Store it under sterile conditions at -20°C to -80°C. It is recommended that the protein be aliquoted for optimal storage. Avoid repeated freeze-thaw cycles.

Reconstitution

Adding sterile water, prepare a stock solution of 0.25 mg/ml. Concentration is measured by UV-Vis.

SDS-PAGE



Rat IL2RG / CD132 Protein (Fc Tag) SDS-PAGE