

Mouse CD302/CLEC13A (Fc Tag) recombinant protein



Catalog Number: 501533

General Information

Gene Name Synonym

C-type lectin domain family 13 member A; Type I transmembrane C-type lectin receptor DCL-1

Protein Construction

A DNA sequence encoding the extracellular domain of mouse CD302 isoform 2 (Q9DCG2-2) (Met 1-His 156) was fused with the Fc region of human IgG1 at the C-terminus.

Organism

Mouse

Expression Host

Human Cells

QC Testing

Purity

> 93 % as determined by SDS-PAGE

Endotoxin

< 1.0 EU per μg of the protein as determined by the LAL method

Stability

Samples are stable for up to twelve months from date of receipt at -70°C

Predicted N terminal

Asp 21

Molecular Mass

The secreted recombinant mouse CD302/Fc is a

disulfide-linked homodimer. The reduced monomer comprises 377 amino acids and has a calculated molecular mass of 42.6 kDa. As a result of glycosylation, the apparent molecular mass of rmCD302/Fc monomer is approximately 48 kDa in SDS-PAGE under reducing conditions.

Formulation

Lyophilized from sterile PBS, pH 7.4

1. 5 % trehalose and mannitol are added as protectants before lyophilization.

2. Please contact us for any concerns or special requirements.

Usage Guide

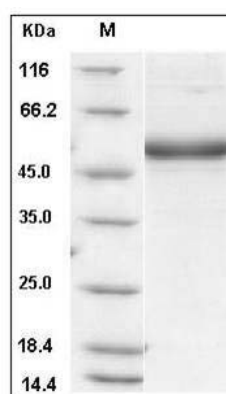
Storage

Store it under sterile conditions at -20°C to -80°C . It is recommended that the protein be aliquoted for optimal storage. Avoid repeated freeze-thaw cycles.

Reconstitution

Adding sterile water, prepare a stock solution of 0.25 mg/ml. Concentration is measured by UV-Vis.

SDS-PAGE



Mouse CD302 / CLEC13A Protein (Fc Tag) SDS-PAGE