

Canine CD3e/CD3 epsilon (Fc Tag) recombinant protein



Catalog Number: 501521

General Information

Protein Construction

A DNA sequence encoding the canine CD3E (NP_001003379.1) (Met1-Leu122) was expressed with the Fc region of human IgG1 at the C-terminus.

Organism

Canine

Expression Host

Human Cells

QC Testing

Purity

> 85 % as determined by SDS-PAGE.

Endotoxin

<1.0 EU per µg protein as determined by the LAL method.

Stability

Samples are stable for up to twelve months from date of receipt at -70°C

Predicted N terminal

Gln 22

Molecular Mass

The recombinant canine CD3E consists 339 amino acids and predicts a molecular mass of 38.2 kDa.

Formulation

Lyophilized from sterile PBS, pH 7.4.

1. 5 % trehalose and mannitol are added as protectants before lyophilization.

2. Please contact us for any concerns or special requirements.

Usage Guide

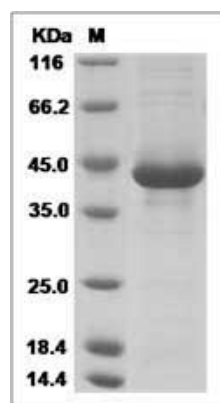
Storage

Store it under sterile conditions at -20°C to -80°C. It is recommended that the protein be aliquoted for optimal storage. Avoid repeated freeze-thaw cycles.

Reconstitution

Adding sterile water, prepare a stock solution of 0.25 mg/ml. Concentration is measured by UV-Vis.

SDS-PAGE



CD3E protein SDS-PAGE