

General Information

Gene Name Synonym

CRP55; Calregulin; Endoplasmic reticulum resident protein 60; HACBP; grp60

Protein Construction

A DNA sequence encoding the human CALR (P27797) (Met1-Ala413) was expressed with the Fc region of human IgG1 at the C-terminus.

Organism

Human

Expression Host

Human Cells

QC Testing

Purity

(75.9+20.5) % as determined by SDS-PAGE

Endotoxin

< 1.0 EU per µg of the protein as determined by the LAL method

Stability

Samples are stable for up to twelve months from date of receipt at -70°C

Predicted N terminal

Glu 18

Molecular Mass

The recombinant human CALR/Fc is a disulfide-linked homodimer. The reduced monomer

comprises 637 amino acids and has a predicted molecular mass of 73 kDa. The apparent molecular mass of the protein is approximately 96 and 38 kDa in SDS-PAGE under reducing conditions.

Formulation

Lyophilized from sterile PBS, pH 7.4

1. 5 % trehalose and mannitol are added as protectants before lyophilization.

2. Please contact us for any concerns or special requirements.

Usage Guide

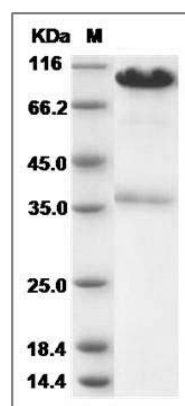
Storage

Store it under sterile conditions at -20°C to -80°C. It is recommended that the protein be aliquoted for optimal storage. Avoid repeated freeze-thaw cycles.

Reconstitution

Adding sterile water, prepare a stock solution of 0.25 mg/ml. Concentration is measured by UV-Vis.

SDS-PAGE



Human CALR / Calreticulin Protein (Fc Tag) SDS-PAGE