

# Mouse SMPD1 (His Tag) recombinant protein



Catalog Number: 501452

## General Information

### Gene Name Synonym

Acid sphingomyelinase

### Protein Construction

A DNA sequence encoding the mouse SMPD1 (Q04519) (Met 1-Leu 626) was expressed with a C-terminal polyhistidine tag.

### Organism

Mouse

### Expression Host

Baculovirus-Insect Cells

## QC Testing

### Activity

Measured by its ability to cleave 2-N-Hexadecanoylamino-4-nitrophenylphosphorylcholine (HNPPC). The specific activity is > 1,500 pmoles/min/ $\mu$ g.

### Purity

> 85 % as determined by SDS-PAGE

### Endotoxin

< 1.0 EU per  $\mu$ g of the protein as determined by the LAL method

### Stability

Samples are stable for up to twelve months from date of receipt at -70°C

### Predicted N terminal

Leu 45

## Molecular Mass

The secreted recombinant mouse SMPD1 consists of 592 amino acids and has a calculated molecular mass of 66.3 kDa. It migrates as an approximately 63 kDa band in SDS-PAGE under reducing conditions.

## Formulation

Lyophilized from sterile 20mM Tris, 500mM NaCl, 10% glycerol, pH 8.0, 0.1% Tween20

1. 5 % trehalose and mannitol are added as protectants before lyophilization.
2. Please contact us for any concerns or special requirements.

## Usage Guide

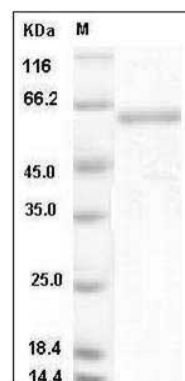
### Storage

Store it under sterile conditions at -20°C to -80°C. It is recommended that the protein be aliquoted for optimal storage. Avoid repeated freeze-thaw cycles.

### Reconstitution

Adding sterile water, prepare a stock solution of 0.25 mg/ml. Concentration is measured by UV-Vis.

## SDS-PAGE



Mouse SMPD1 / ASM Protein (His Tag) SDS-PAGE