

Mouse CSRP1 (His Tag) recombinant protein



Catalog Number: 501435

General Information

Gene Name Synonym

Cysteine-rich protein 1

Protein Construction

A DNA sequence encoding the mouse CSRP1 (P97315) (Met 1-Glu 193) was expressed, with a polyhistidine tag at the C-terminus.

Organism

Mouse

Expression Host

E. coli

QC Testing

Purity

> 95 % as determined by SDS-PAGE

Endotoxin

Please contact us for more information.

Stability

Samples are stable for up to twelve months from date of receipt at -70°C

Predicted N terminal

Met

Molecular Mass

The recombinant mouse CSRP1 consisting of 203 amino acids and has a calculated molecular mass

of 22 kDa. rm CSRP1 migrates as an approximately 23 kDa band in SDS-PAGE under reducing conditions.

Formulation

Lyophilized from sterile PBS, pH 7.4

1. 5 % trehalose and mannitol are added as protectants before lyophilization.

2. Please contact us for any concerns or special requirements.

Usage Guide

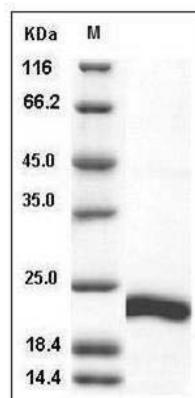
Storage

Store it under sterile conditions at -20°C to -80°C. It is recommended that the protein be aliquoted for optimal storage. Avoid repeated freeze-thaw cycles.

Reconstitution

Adding sterile water, prepare a stock solution of 0.25 mg/ml. Concentration is measured by UV-Vis.

SDS-PAGE



Mouse CSRP1 / CSRP / CRP1 Protein (His Tag)
SDS-PAGE