

Human LAMTOR2/ROBLD3/MAPBPIP (His Tag) recombinant protein



Catalog Number: 501425

General Information

Gene Name Synonym

Endosomal adaptor protein p14; Late endosomal/lysosomal Mp1-interacting protein; Late endosomal/lysosomal adaptor and MAPK and MTOR activator 2; Mitogen-activated protein-binding protein-interacting protein; Roadblock domain-containing protein 3

Protein Construction

A DNA sequence encoding the mature form of human LAMTOR2 isoform 1 (Q9Y2Q5-1) (Met 1-Ser 125) was expressed, with a polyhistidine tag at the N-terminus.

Organism

Human

Expression Host

E. coli

QC Testing

Purity

> 97 % as determined by SDS-PAGE

Endotoxin

Please contact us for more information.

Stability

Samples are stable for up to twelve months from date of receipt at -70°C

Predicted N terminal

Met

Molecular Mass

The recombinant human LAMTOR2 consisting of 136 amino acids and has a calculated molecular mass of 15 kDa. The apparent molecular mass of the protein is approximately 13 kDa in SDS-PAGE under reducing conditions

Formulation

Lyophilized from sterile PBS, pH 7.4

1. 5 % trehalose and mannitol are added as protectants before lyophilization.

2. Please contact us for any concerns or special requirements.

Usage Guide

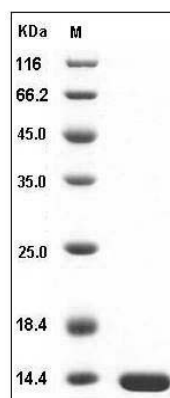
Storage

Store it under sterile conditions at -20°C to -80°C. It is recommended that the protein be aliquoted for optimal storage. Avoid repeated freeze-thaw cycles.

Reconstitution

Adding sterile water, prepare a stock solution of 0.25 mg/ml. Concentration is measured by UV-Vis.

SDS-PAGE



Human LAMTOR2 / ROBLD3 / MAPBPIP Protein
(His Tag) SDS-PAGE