

Human PSG6 (His Tag) recombinant protein



Catalog Number: 501420

General Information

Gene Name Synonym

Pregnancy-specific beta-1-glycoprotein 10;
Pregnancy-specific beta-1-glycoprotein 12

Protein Construction

A DNA sequence encoding the human PSG6 (Met 1-His 424) (NP_001027020) was expressed, with a C-terminal polyhistidine tag.

Organism

Human

Expression Host

Baculovirus-Insect Cells

QC Testing

Purity

> 87 % as determined by SDS-PAGE

Endotoxin

< 1.0 EU per μg of the protein as determined by the LAL method

Stability

Samples are stable for up to twelve months from date of receipt at -70°C

Predicted N terminal

Gln 35

Molecular Mass

The secreted recombinant human PSG6 consists of

400 amino acids and predicts a molecular mass of 45.2 KDa. The apparent molecular mass of the protein is approximately 58 Kda in SDS-PAGE under reducing conditions due to glycosylation.

Formulation

Lyophilized from sterile 20mM Tris, 500mM NaCl, pH 7.4

1. 5 % trehalose and mannitol are added as protectants before lyophilization.

2. Please contact us for any concerns or special requirements.

Usage Guide

Storage

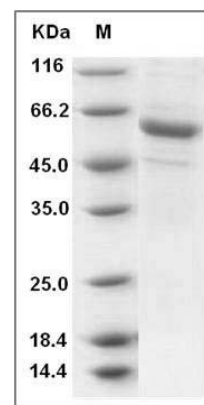
Store it under sterile conditions at -20°C to -80°C .

It is recommended that the protein be aliquoted for optimal storage. Avoid repeated freeze-thaw cycles.

Reconstitution

Adding sterile water, prepare a stock solution of 0.25 mg/ml. Concentration is measured by UV-Vis.

SDS-PAGE



Human PSG6 / PSG10 Protein (His Tag) SDS-PAGE