

# Human GM2A (His Tag) recombinant protein



Catalog Number: 501411

## General Information

### Gene Name Synonym

Cerebroside sulfate activator protein; GM2-AP; Sphingolipid activator protein 3; Ganglioside GM2 activator isoform short

### Protein Construction

A DNA sequence encoding the human GM2A (AAA35907.1) (Met 1-Ile 193) was fused with a polyhistidine tag at the C-terminus.

### Organism

Human

### Expression Host

Baculovirus-Insect Cells

## QC Testing

### Purity

> 96 % as determined by SDS-PAGE

### Endotoxin

< 1.0 EU per  $\mu\text{g}$  of the protein as determined by the LAL method

### Stability

Samples are stable for up to twelve months from date of receipt at  $-70^{\circ}\text{C}$

### Predicted N terminal

Val 22

### Molecular Mass

The secreted recombinant human GM2A (pro

form) comprises 180 amino acids and has a predicted molecular mass of 19.8 kDa. The apparent molecular mass of rh GM2A is approximately 25 kDa in SDS-PAGE under reducing conditions.

### Formulation

Lyophilized from sterile 20mM Tris, 500mM NaCl, pH 7.4, 10% gly

1. 5 % trehalose and mannitol are added as protectants before lyophilization.

2. Please contact us for any concerns or special requirements.

## Usage Guide

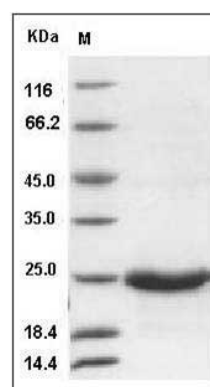
### Storage

Store it under sterile conditions at  $-20^{\circ}\text{C}$  to  $-80^{\circ}\text{C}$ . It is recommended that the protein be aliquoted for optimal storage. Avoid repeated freeze-thaw cycles.

### Reconstitution

Adding sterile water, prepare a stock solution of 0.25 mg/ml. Concentration is measured by UV-Vis.

### SDS-PAGE



Human GM2A Protein (His Tag) SDS-PAGE