

Human PLBD2 (His Tag) recombinant protein



Catalog Number: 501329

General Information

Gene Name Synonym

76 kDa protein; LAMA-like protein 2; Lamina ancestor homolog 2; Phospholipase B domain-containing protein 2; Putative phospholipase B-like 2 32 kDa form; Putative phospholipase B-like 2 45 kDa form

Protein Construction

A DNA sequence encoding the human PLBD2 (Q8NHP8) (Met1-Asp589) was expressed with a polyhistidine tag at the C-terminus.

Organism

Human

Expression Host

Human Cells

QC Testing

Purity

(69.5+23.3+6.5) % as determined by SDS-PAGE

Endotoxin

< 1.0 EU per μg of the protein as determined by the LAL method

Stability

Samples are stable for up to twelve months from date of receipt at -70°C

Predicted N terminal

Ile 42

Molecular Mass

The recombinant human PLBD2 consists of 559 amino acids and predicts a molecular mass of 62.7 KDa. It migrates as an approximately 68,46 and 34 KDa band in SDS-PAGE under reducing conditions.

Formulation

Lyophilized from sterile PBS, pH 7.4.

1. 5 % trehalose and mannitol are added as protectants before lyophilization.

2. Please contact us for any concerns or special requirements.

Usage Guide

Storage

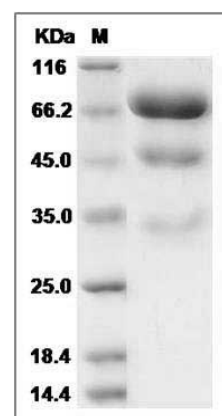
Store it under sterile conditions at -20°C to -80°C .

It is recommended that the protein be aliquoted for optimal storage. Avoid repeated freeze-thaw cycles.

Reconstitution

Adding sterile water, prepare a stock solution of 0.25 mg/ml. Concentration is measured by UV-Vis.

SDS-PAGE



Human PLBD2 Protein (His Tag) SDS-PAGE