

# Mouse Cathepsin A/CTSA (His Tag) recombinant protein



Catalog Number: 501320

## General Information

### Gene Name Synonym

Carboxypeptidase C; Carboxypeptidase L; Cathepsin A; Protective protein cathepsin A; Protective protein for beta-galactosidase; Lysosomal protective protein 32 kDa chain; Lysosomal protective protein 20 kDa chain

### Protein Construction

A DNA sequence encoding the mouse CTSA (P16675-1) (Met 1-Tyr 474) was expressed, with a C-terminal polyhistidine tag.

### Organism

Mouse

### Expression Host

Human Cells

## QC Testing

### Purity

> 96 % as determined by SDS-PAGE

### Endotoxin

< 1.0 EU per  $\mu\text{g}$  of the protein as determined by the LAL method

### Stability

Samples are stable for up to twelve months from date of receipt at  $-70^{\circ}\text{C}$

### Predicted N terminal

Ala 24

### Molecular Mass

The secreted recombinant mouse CTSA consists of 462 amino acids and has a calculated molecular mass of 52.8 kDa as estimated in SDS-PAGE under reducing conditions.

### Formulation

Lyophilized from sterile 25mM Tris, 0.3M NaCl, pH 8.0

1. 5 % trehalose and mannitol are added as protectants before lyophilization.
2. Please contact us for any concerns or special requirements.

## Usage Guide

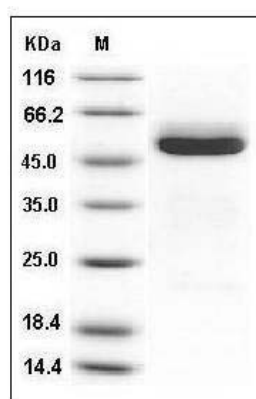
### Storage

Store it under sterile conditions at  $-20^{\circ}\text{C}$  to  $-80^{\circ}\text{C}$ . It is recommended that the protein be aliquoted for optimal storage. Avoid repeated freeze-thaw cycles.

### Reconstitution

Adding sterile water, prepare a stock solution of 0.25 mg/ml. Concentration is measured by UV-Vis.

### SDS-PAGE



Mouse Cathepsin A / CTSA Protein (His Tag) SDS-PAGE